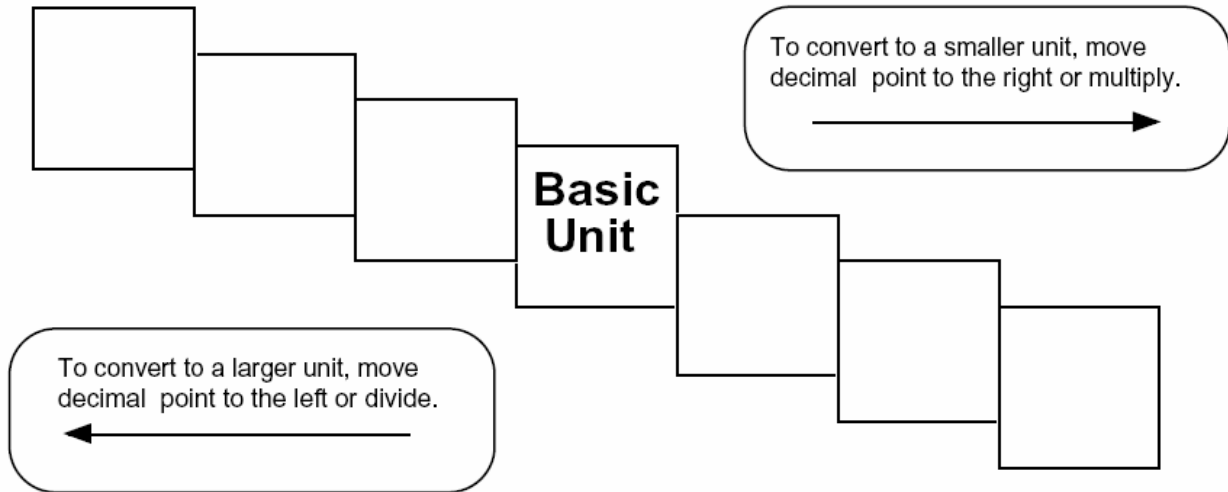


Metric Mania

Name _____

Metric Conversions

Fill in the boxes in the stair step diagram.



Try these conversions, using the ladder method.

$1000 \text{ mg} = \underline{\hspace{2cm}} \text{ g}$

$1 \text{ L} = \underline{\hspace{2cm}} \text{ mL}$

$160 \text{ cm} = \underline{\hspace{2cm}} \text{ mm}$

$14 \text{ km} = \underline{\hspace{2cm}} \text{ m}$

$109 \text{ g} = \underline{\hspace{2cm}} \text{ kg}$

$250 \text{ m} = \underline{\hspace{2cm}} \text{ km}$

Compare using $<$, $>$, or $=$.

$56 \text{ cm} \bigcirc 6 \text{ m}$

$7 \text{ g} \bigcirc 698 \text{ mg}$

Metric Mania

Name _____

Metric Conversions

Write the correct abbreviation for each metric unit.

1) Kilogram _____

4) Milliliter _____

7) Kilometer _____

2) Meter _____

5) Millimeter _____

8) Centimeter _____

3) Gram _____

6) Liter _____

9) Milligram _____

Try these conversions, using the ladder method.

10) 2000 mg = _____ g

15) 5 L = _____ mL

20) 16 cm = _____ mm

11) 104 km = _____ m

16) 198 g = _____ kg

21) 2500 m = _____ km

12) 480 cm = _____ m

17) 75 mL = _____ L

22) 65 g = _____ mg

13) 5.6 kg = _____ g

18) 50 cm = _____ m

23) 6.3 cm = _____ mm

14) 8 mm = _____ cm

19) 5.6 m = _____ cm

24) 120 mg = _____ g

Compare using <, >, or =.

25) 63 cm ○ 6 m

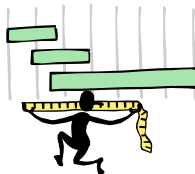
27) 5 g ○ 508 mg

29) 1,500 mL ○ 1.5 L

26) 536 cm ○ 53.6 dm

28) 43 mg ○ 5 g

30) 3.6 m ○ 36 cm



Metric Mania Answer Keys

Conversion Practice

NOTE: See PowerPoint Presentation for the stair step boxes.

1000 mg = 1 g
160 cm = 1600 mm
109 g = 0.109 kg
1 l = 1000 ml
14 km = 14000 m
250 m = .250 km

56 cm < 6 m
7 g > 698 mg

Conversion Challenge

1. kg
2. m
3. g
4. ml
5. mm
6. l
7. km
8. cm
9. mg
10. 2 g
11. 104000 m
12. 4.8 m
13. 5600 g
14. .8 cm
15. 5000 ml
16. 0.198 kg
17. 0.075 l
18. 0.5 m
19. 560 cm
20. 160 mm
21. 2.5 km
22. 65000 mg
23. 63 mm
24. 0.12 g
25. <
26. >
27. =
28. =
29. <
30. >